

¿Need manufacturing,
supply and service for
railroads, transit systems
or crane runways?
WE GOT THIS

DORANCE



Gantry and System of Railroads

GSR

¿Why Dorance?



Projects have been executed in 5 countries (Colombia, Ecuador, Peru, Chile and Panama) and we are the preferred ones in many steel companies and seaports and civil constructor of railroads in South America

The best and more profitable solution

We produce all types and sizes of rail systems for bridge cranes, railroads and lifting equipment, in extreme environments, becoming for you in

The #1

Rails supplied, assembled and welded



Rails, clips, pads for use in extreme conditions and requiring aluminothermic welding, these have been assembled in steel mills, mines, cement plants, seaports and railroads.

- **+7600m in crane railways**
- **+60km in railroads**

A Railroad manufacturing and supply company

We're your single source solution for class I and heavy haul railroads, light rail transits, railroad contractors, and industrial enterprises



Railroads and crane railways

Specialists

Dorance enjoys being one of the few Latin American companies as railroad and crane ways specialists, backed by European rail manufacturers in Study, design, and supply of complex railways for industrial cranes, sea port cranes and any type of system of displacement of rolling devices for projects of all kinds around South America.

Through Dorance SAS runway services (DRS), our wholly-owned subsidiary, we provide comprehensive runway systems, DRS offers complete turnkeyservices, including surveys, inspections, engineering, Project management, installation, flash welding, repairs, and preventive maintenance. Our wide array of products and services gives us the unique ability to provide our custoemrs with extraordinary value.



Rails supplied, assembled and welded

Rails, clips, pads in extreme conditions and requiring aluminothermic welding, have been installed in steel plants, mines, seaports and cement plants.

+ 7600m crane railways

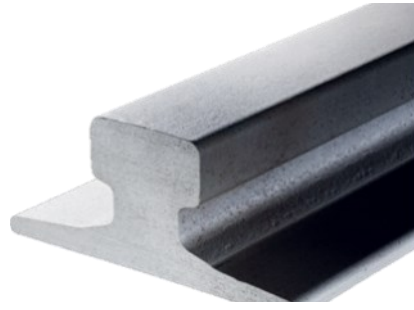
+ 60km in railroads

+800 welds

Crane railways



Clips for rail Welded and bolted clips, capacity 50kN to 200kN wheel load.



Rails DIN, ASCE, CR, tensil strength 680 N/mm², 880N/mm² y 1100N/mm² and lenght 6 –12 meters.



Pad continuos or discontinuous oil resistant materials.



Base plate: continuos, discontinuous base plate HDG or Galvanized m a -

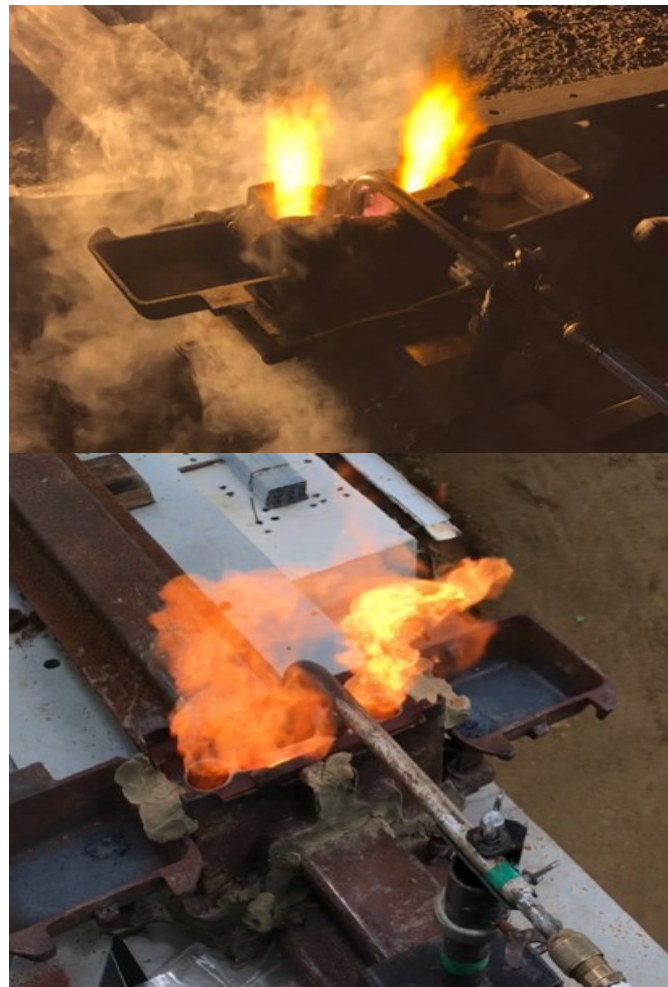
THERMITE WELD

When we need to weld the rail?

The welding kit is the better option when:

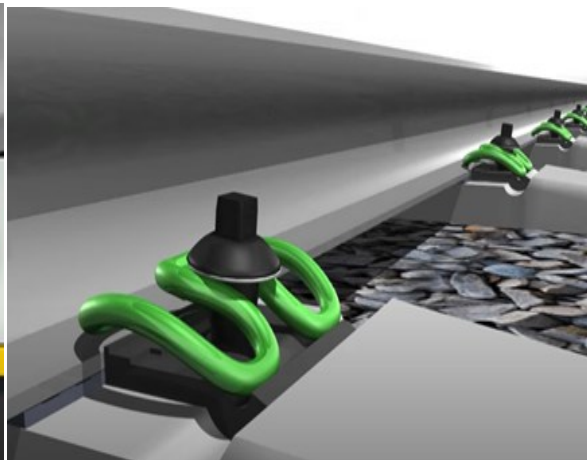
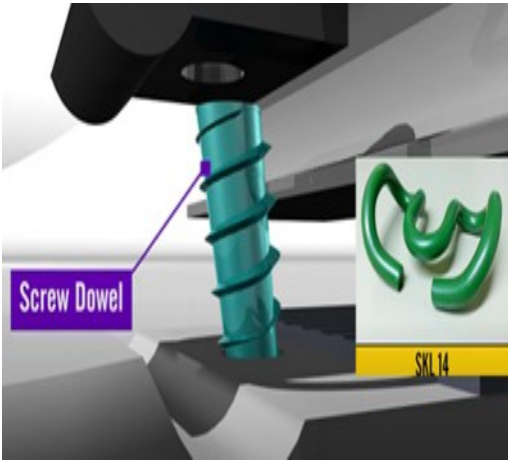
- Speed more than 60 m/min
- Load capacity is more than 40 tons
- Process reliability

The Aluminothermic welding guarantees the useful life of the crane, its wheels, bearings and electrical system, thanks to the elimination of impacts when passing through the joints of the rails.



Railroads

Fastening systems



Turnout & Switch

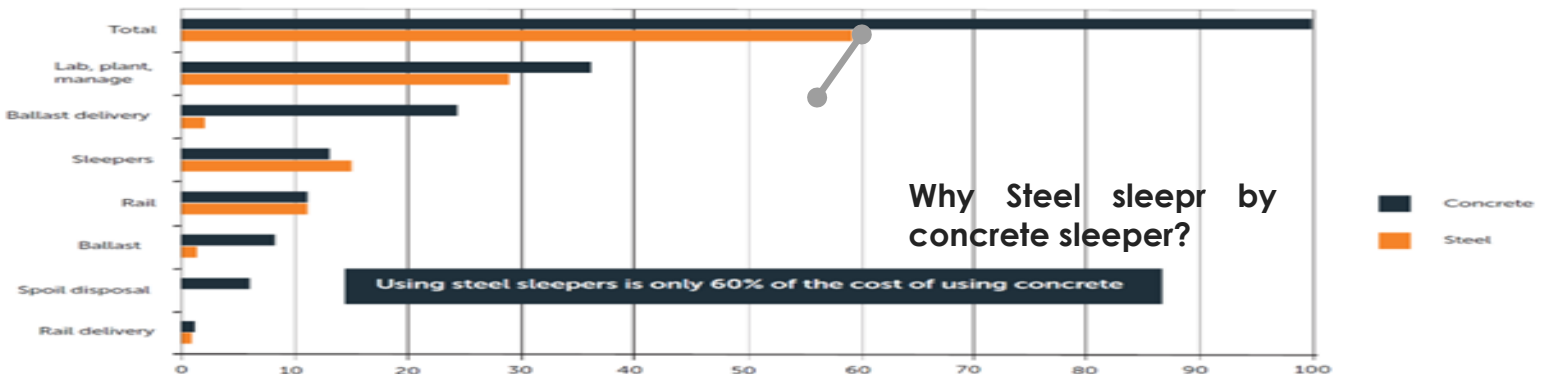


Embedded rail system





Place and Date	Antofagasta—Chile August 2016
Rails	3480 meters ARA90 (TR45) + Steel sleepers
Clips	2000 sets weldable clips ZBRF
Thermite weld	360
Objectives	20 days to prepare and 11 days to execution 0 accidents No more stopped due to operator complaints 0 defects in the welds
Results	20 days to prepare and 11 days to execution 0 accidents 0 defects The customer did not believe that his problema of 10 years old would end



DORANCE RAILS in new sea port in Chile

Grúas puente & Sistemas de Rieles GSR



Place and Date	Mejillones—Chile October 2017
Rails	500 meters DIN A120
Growth	150 MPa Epoxi Grout
Thermite weld	32 sets
Objectives	22 days to execution 0 accidents 0 defects in the welds
Results	20 days of execution 0 accidents 0 defects

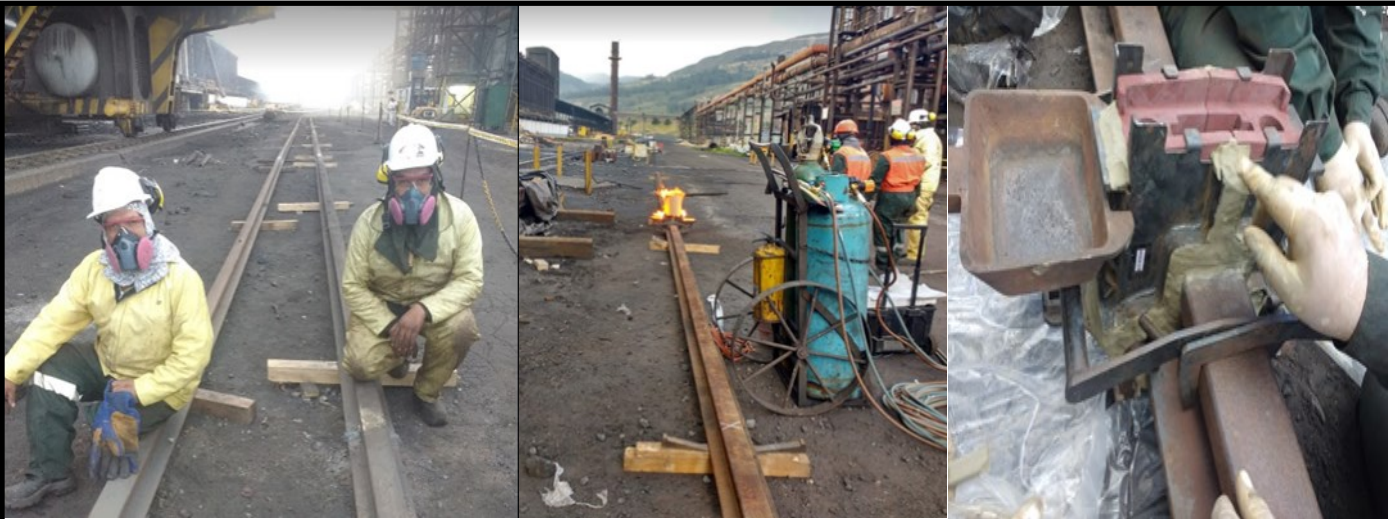




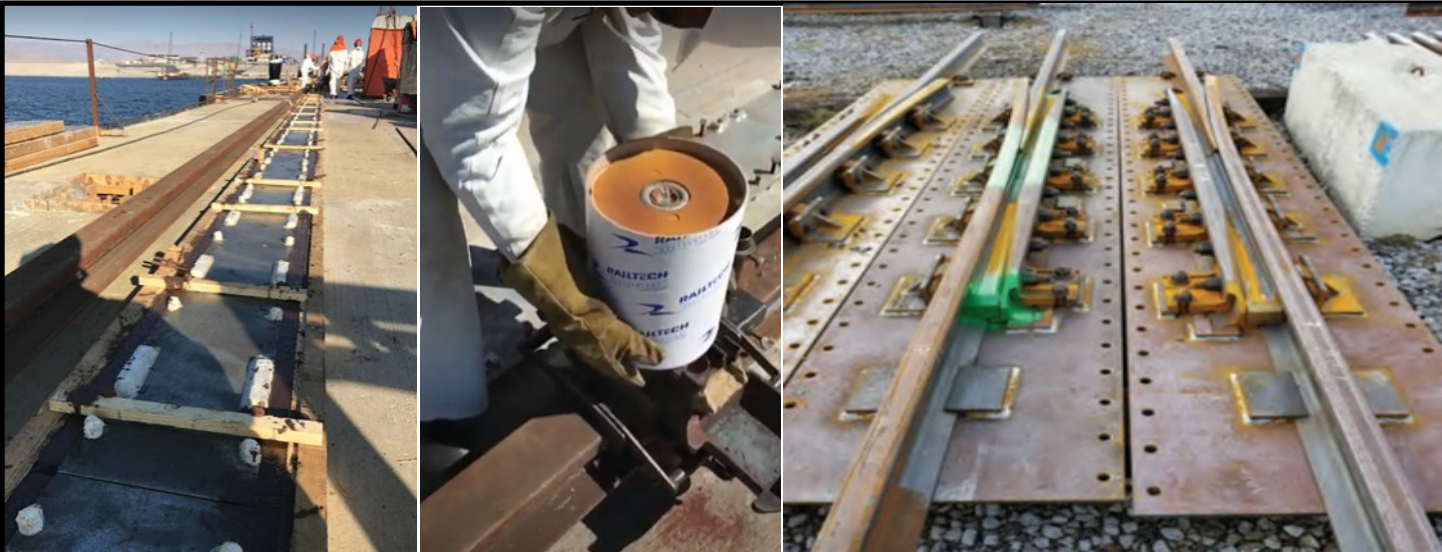
Place and Date	Barranquilla —Colombia February 2020
Rails	1240 meters DIN A100
Clips	5000 sets weldable clips
Thermite weld	86 sets
Objectives	1240 meters of rails welded 0 accidents 4 cranes 0 defects in the welds and cranes
Results	1240 meters of welded and installed rails 0 accidents 4 cranes Customer very happy with us and new busineses to 2021 year in next projects.

DORANCE More experience

Grúas puente & Sistemas de Rieles GSR



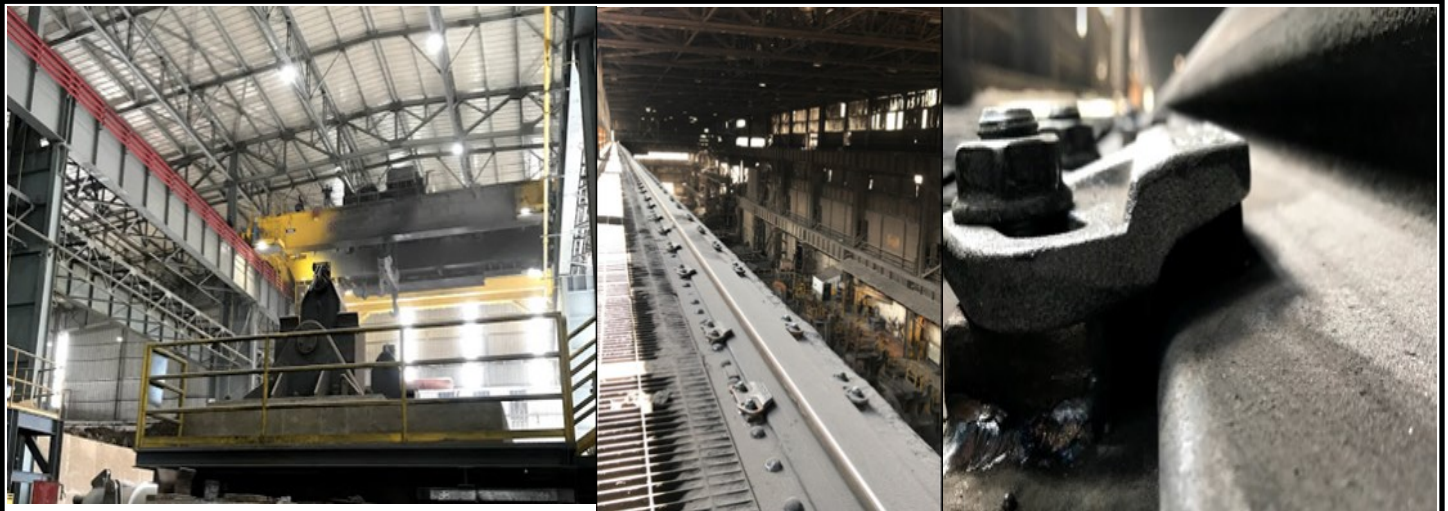
Place and Date	Bogota—Colombia March 2017
Resume	1000 meters of Rail DIN A65 to change the railroad of carbon feeder train, the time execution was 15 days with our engineers team and assembly services



Place and Date	Chimbote — Peru November 2017
Resume	The private seaport need the rails to the railroad system with load of 1960 Tons to billets of Steel. The Switch way, welds and rails from Dorance

DORANCE More experience

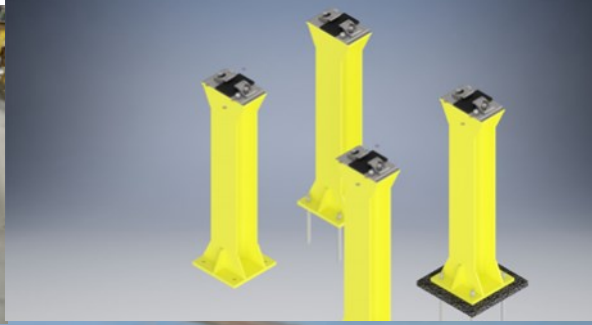
Grúas puente & Sistemas de Rieles GSR



Place and Date	Guayaquil—Ecuador March 2018
Resume	Supplier of material and service to old Steel factory en Milagros, 650 meters of Rail DIN A120 and clips, pad, bad assembly of old supplier required new Project to repair and change all system.



Place and Date	Buenaventura Colombia — August 2019
Resume	Due to rail fractures due to manufacturer installation errors in 2013, we were contracted to change 8 damaged DIN A150 rails



Place and Date	Cali—colombia August 2016
Title	Pillars and Embedded rail
Material	50 pillars + base plate + clips + thermite weld + polymeric solution
Thermite weld	360
Objectives	10 days to execution 0 accidents Reliability 0 defects in the welds
Results	10 days to execution 0 accidents 0 defects The customer happy